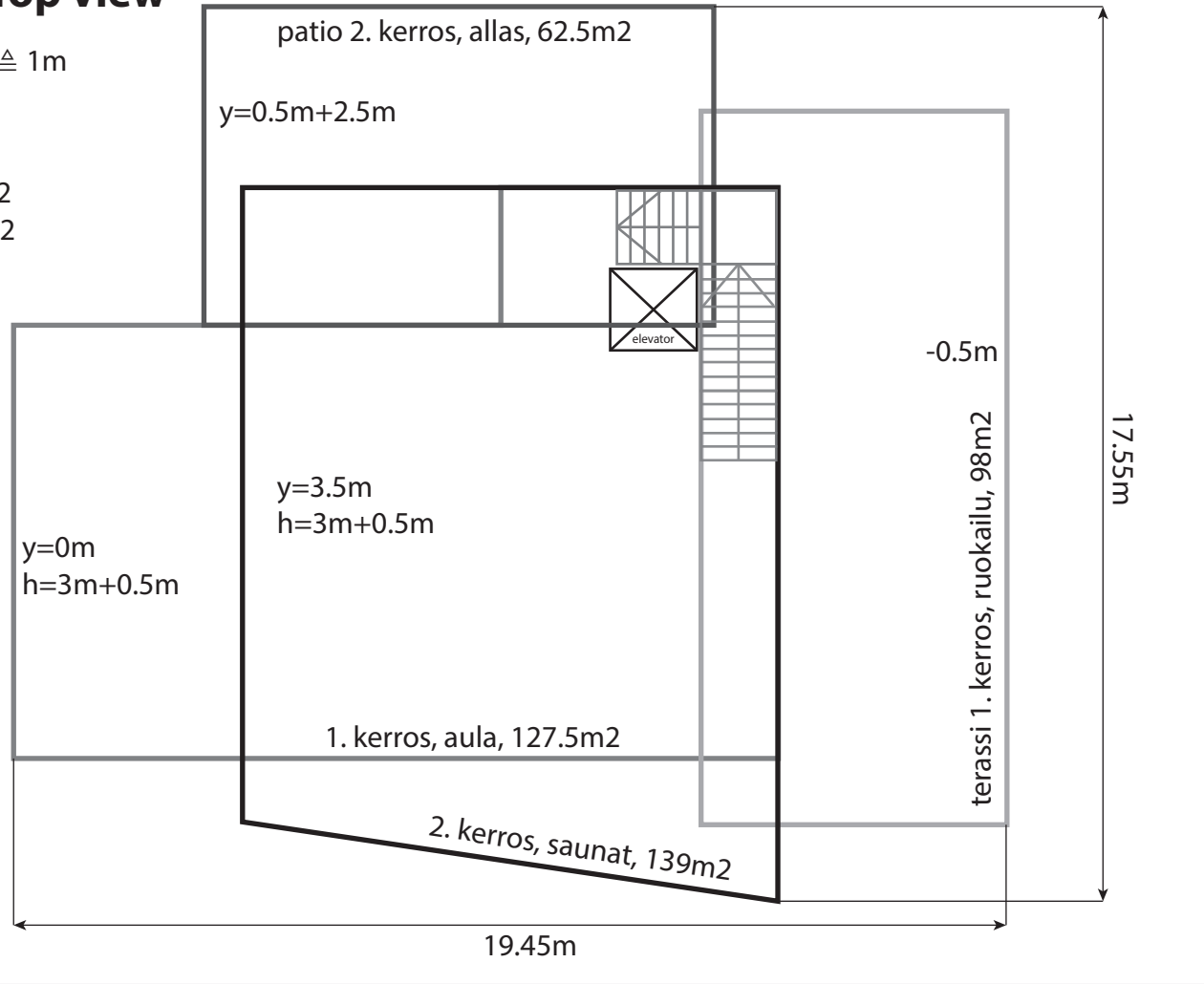


Building, Top view

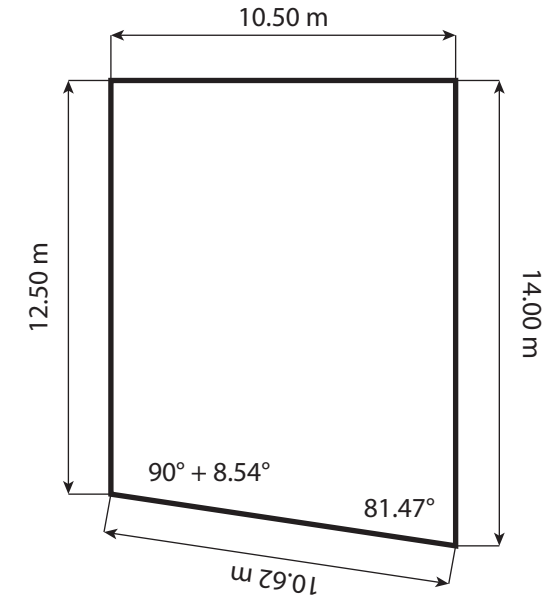
I 1m 20 pt \triangleq 1m

total 394.25m²
 indoor 233.75m²
 outdoor 160.5m²

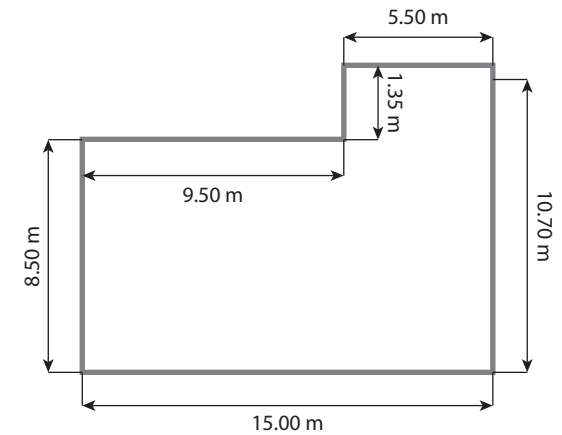


Separate floors, Top view

2nd floor



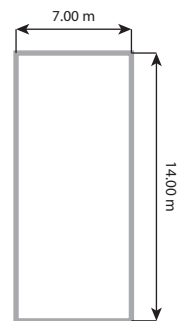
1st floor



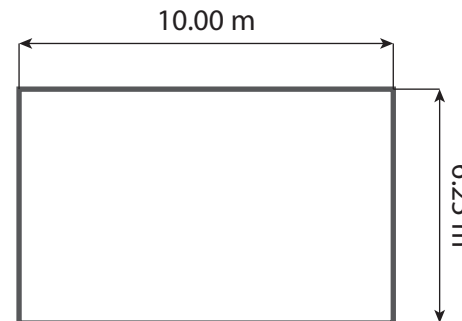
Information about these architectural plans

These plans are only design references and not complete building instructions. The plans need validation and completion by a qualified structural engineer. These plans are not guaranteed to conform to local safety regulations. The plans also do not contain HVAC, electricity or plumbing plans.

Lower patio

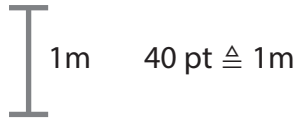


Upper patio

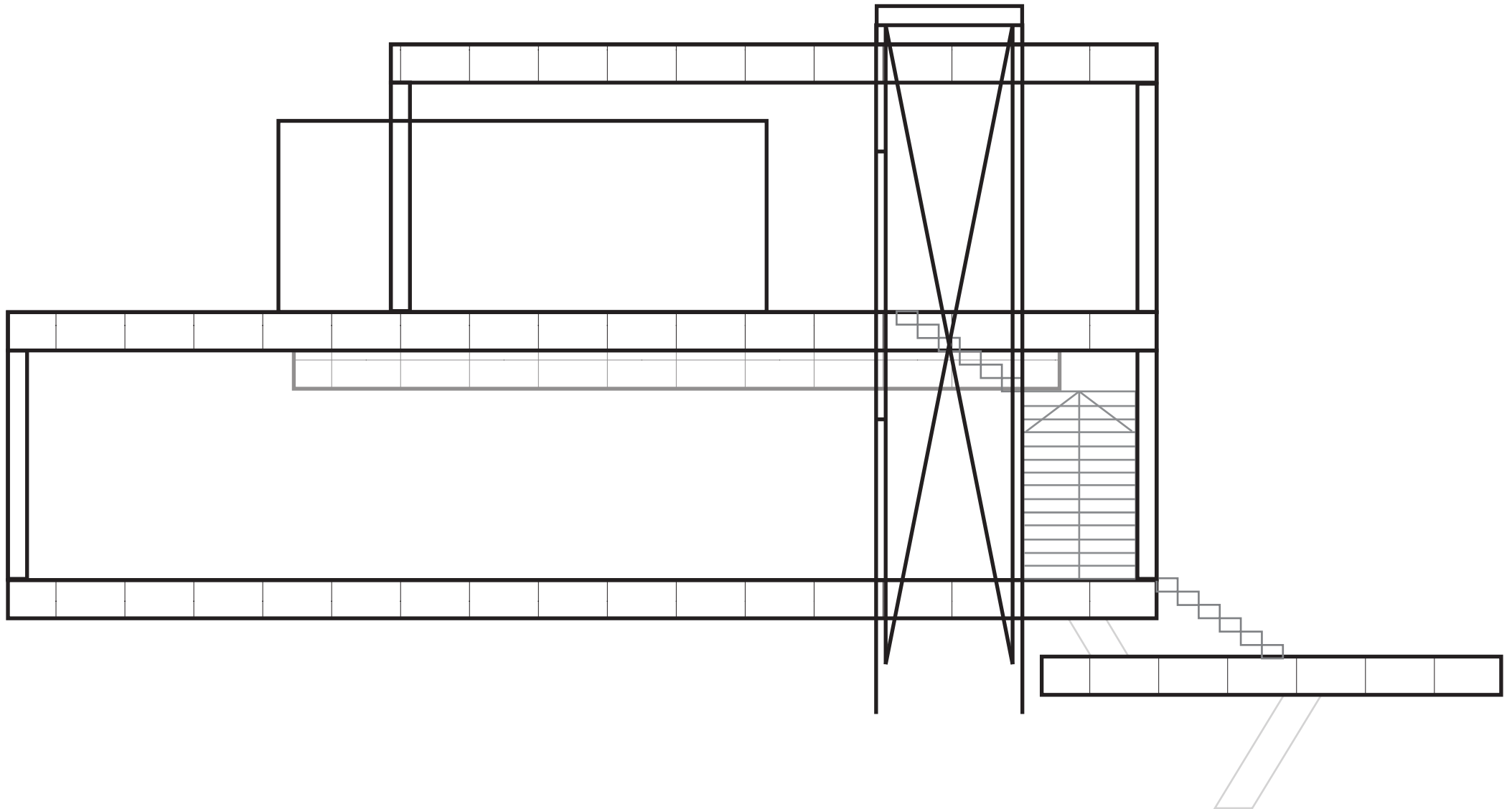


These profiles are not in scale

Building, Side view, from east

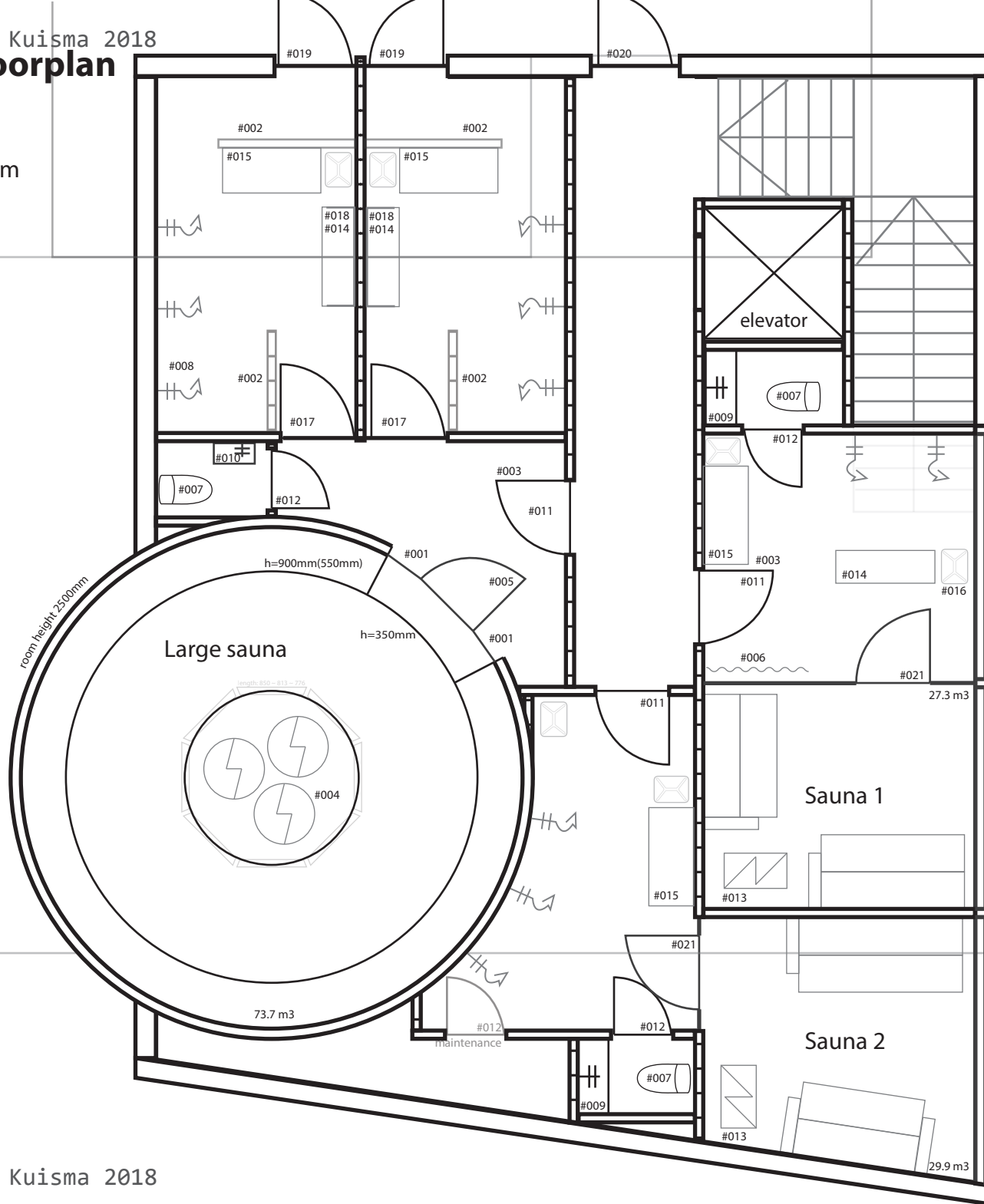
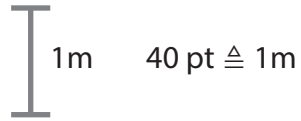


floor/ceiling height 500mm



2nd floor, floorplan

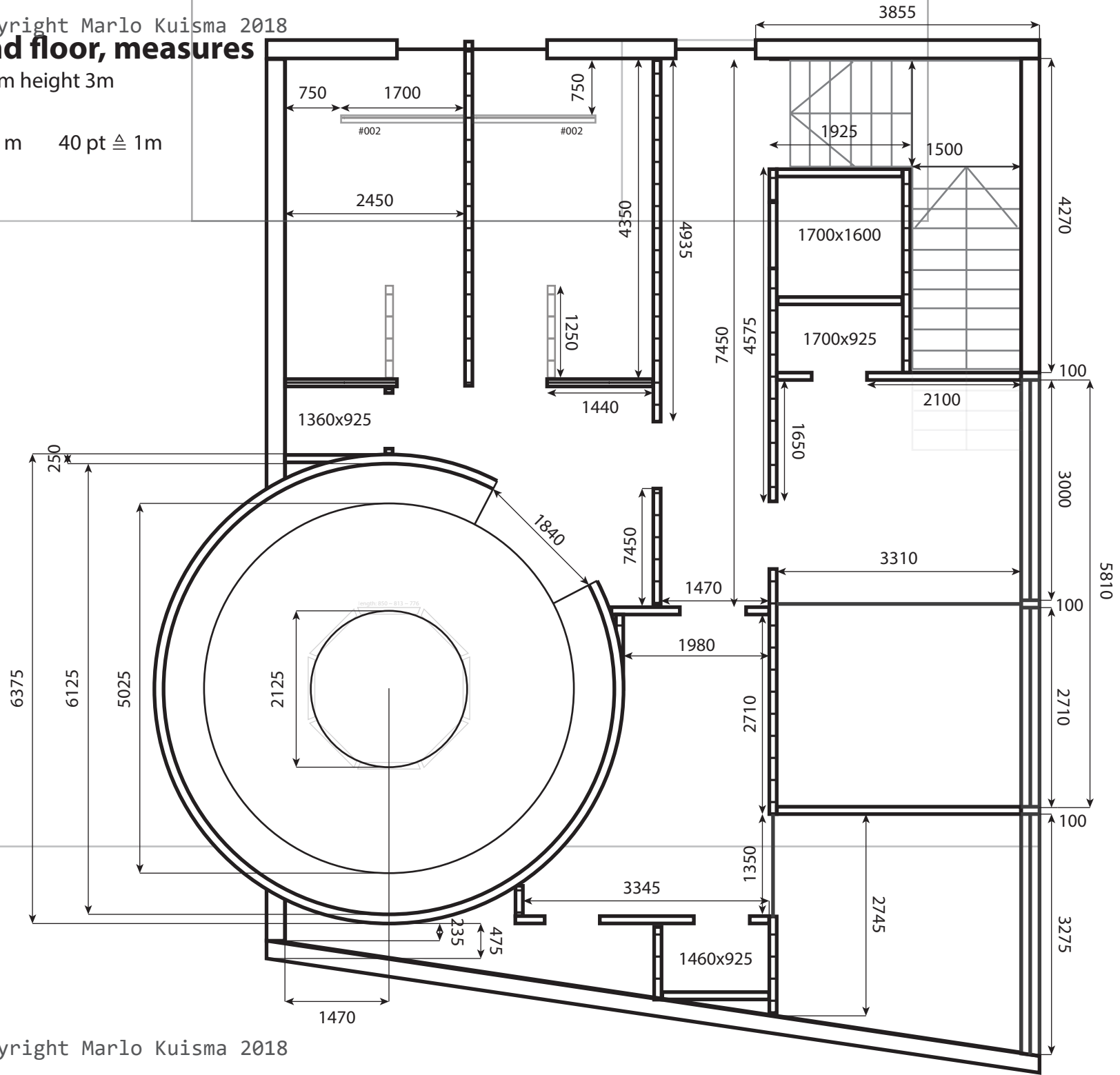
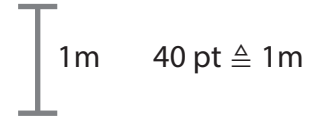
room height 3m



- #001 waterfall window (500mm)
- #002 texturized concrete wall, h=1.8m
- #003 door stopper
- #004 Pilari-IKI 30kW (h=1250mm)
- #005 Oksa saunaovi (pystyvedin, mänty, 9x19M)
- #006 Vallila Vaahtera curtain, green or beige
- #007 IDO Glow 64
- #008 Oras Signa 6392-11
- #009 IDO Elegant Compact 16512 (900 mm)
- #010 IDO Compact
- #009 & #010 ALESSI Sense by Oras
- #011 Lumi+ lasiovi (haapa, 9x21M)
- #012 BATH 201RVK (7x21M)
- #013 Tulikivi Tuisku XL 18kW (h=950mm)
- #014 Skagerak Cutter Bench 120
- #015 Z-pukukaappi Classic, 3 osaa, 6 lokeroa, mustat ovet
- #016 Fredericia Nara coat stand
- #017 BATH Harmaa+ (9x21M)
- #018 Skagerak Cutter Wardrobe
- #019 Character Luna, NCS S 7502-B, satin glass
- #020 Character Pulse, NCS S 7502-B, satin glass
- #021 Kirkas 87 saunanovi (pystyvedin, 9x19M)

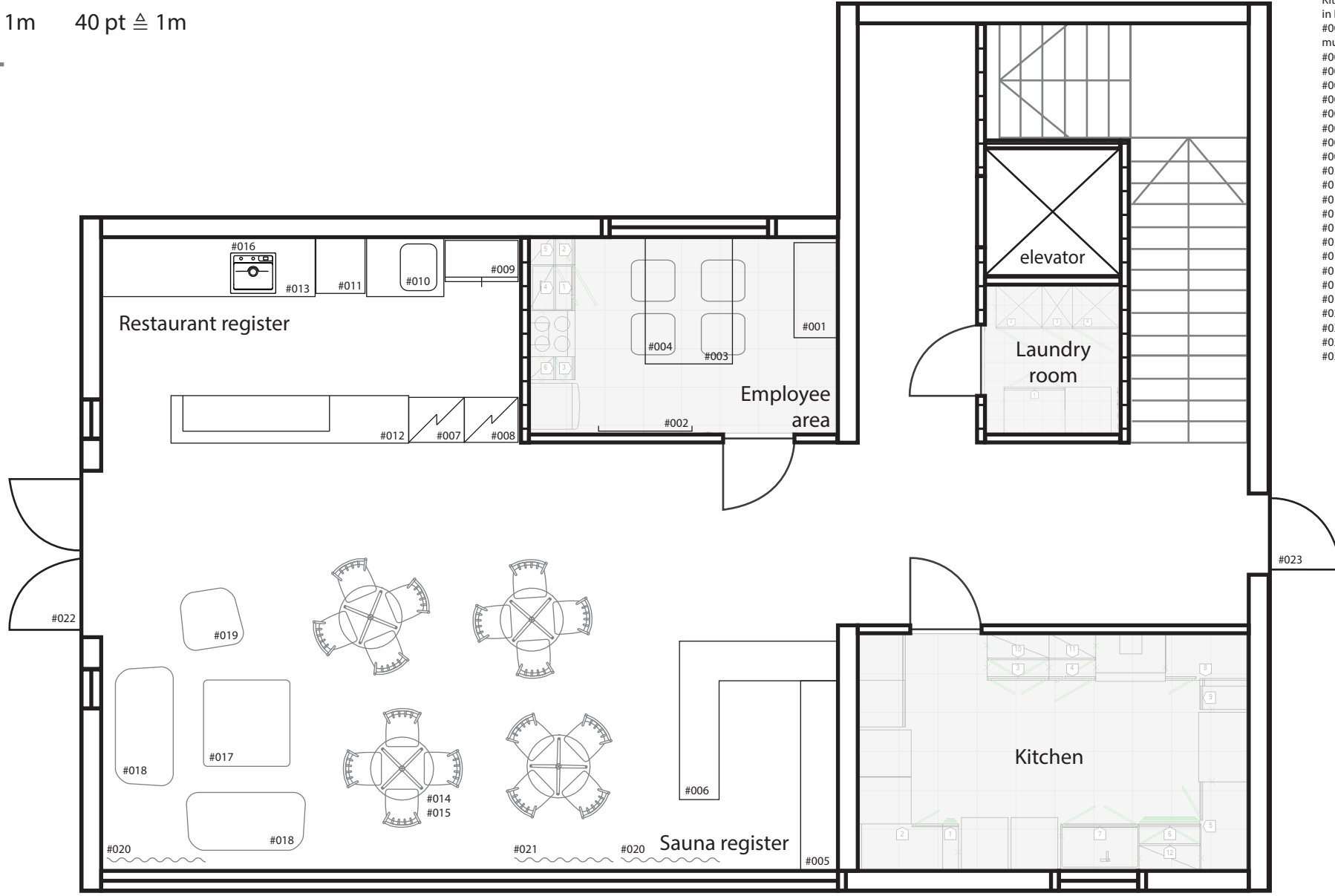
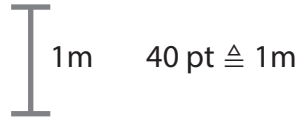
2nd floor, measures

room height 3m



1st floor, floorplan

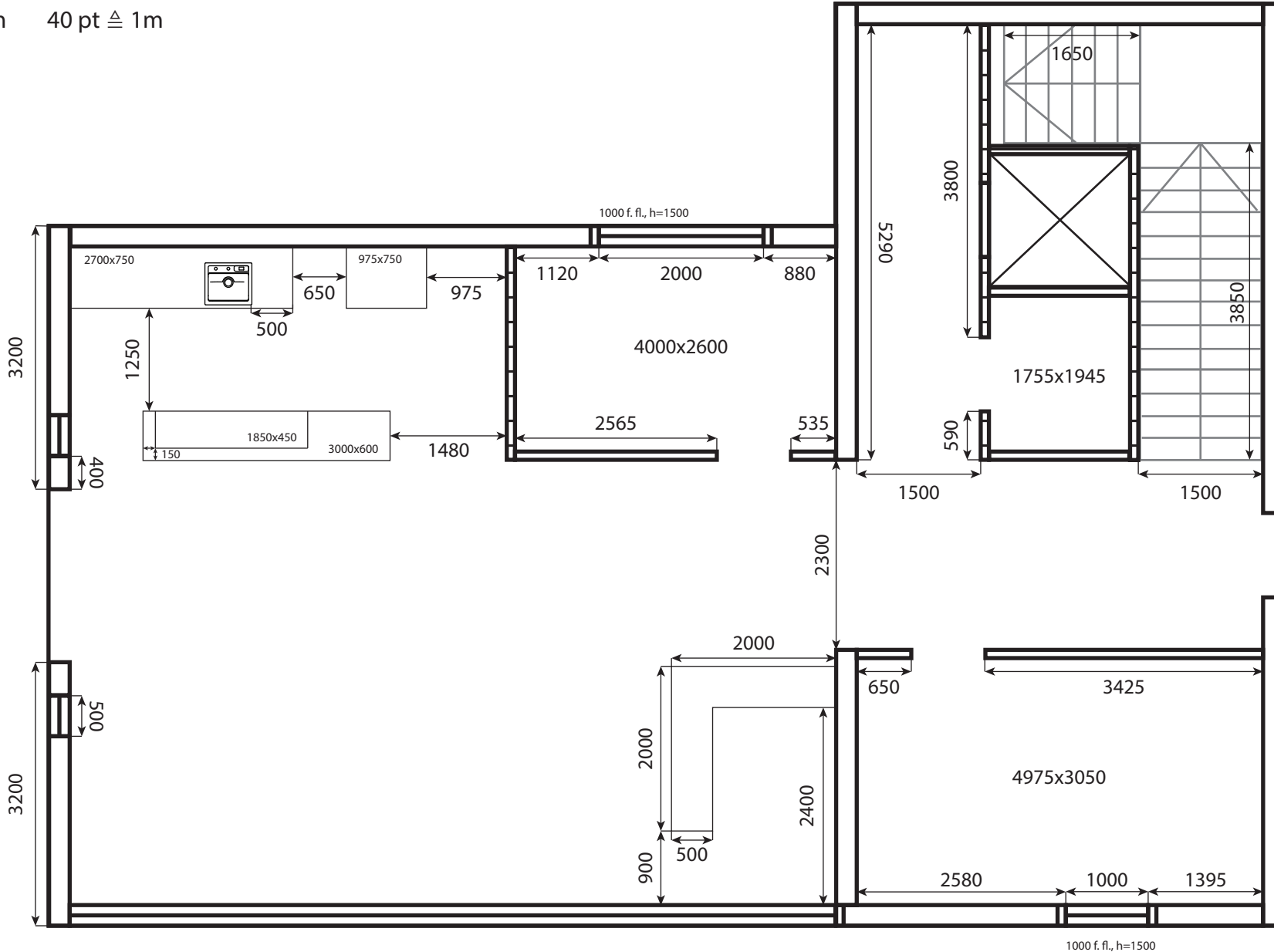
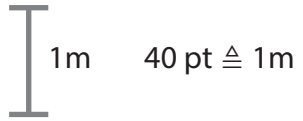
room height 3m

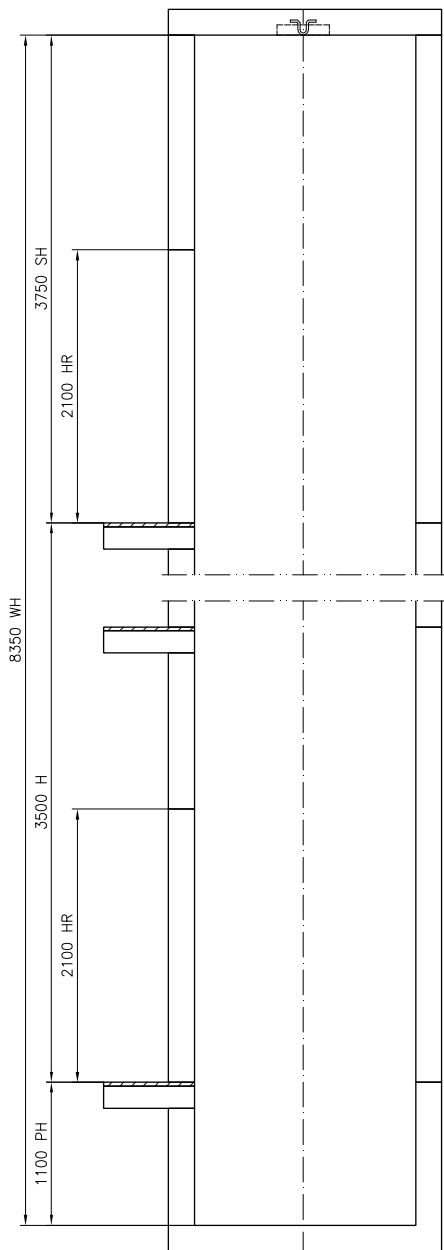


- Kitchen, laundry room and employee are desinged in Kvik Furnish Pro
- #001 Z-pukukaappi Classic, 3 osaa, 6 lokeroa, mustat ovet
 - #002 Magvision Abstracta, optic white, 1180x1000
 - #003 Karl Andersson & Söner Ypsilon YP1 160110
 - #004 Alias Tindari Wood YS141
 - #005 Sedus Relations W2400 3OH C11
 - #006 Reception desk (h=1100), juniper
 - #007 Kylmävitriini (LED valot) 852120
 - #008 Lämpövitriini (LED valot) 852121
 - #009 Pullokaappi 2xlasiovella (882171)
 - #010 Zircon Mini Control 1 Group with Grinder
 - #011 Avintage Diva DVP180G V Free-Standing
 - #012 Counter, h=1100/900, juniper, closets/empty
 - #013 Counter, h=1100, juniper, drawers, metal top
 - #014 Vitra Belleville Table, Bistro, veener dark oak
 - #015 HAY J77 Chair Black
 - #016 Stala Combo CEG51-57B; Oras Cubista 2839F
 - #017 Tacchini Nara 109x109, black
 - #018 HAY AAL Sofa Balder 692 soaped solid oak
 - #019 HAY AAL 82 Balder 692 soaped solid oak
 - #020 Vallila Metsovaara Suvi curtain
 - #021 Vallila Meeri curtain
 - #022 Clear glass door
 - #023 Character Pulse, NCS S 7502-B, satin glass

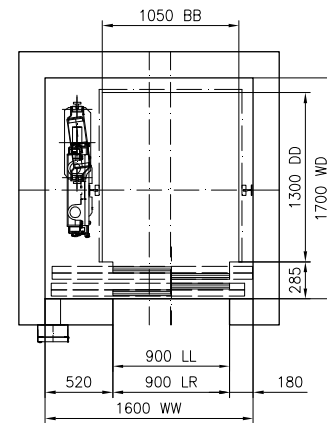
1st floor, measures

room height 3m





KEY LEGEND	
WW	= WELL WIDTH
WD	= WELL DEPTH
BB	= CAR WIDTH
DD	= CAR DEPTH
LL	= DOOR WIDTH
LR	= DOOR RAW OPENING WIDTH
HR	= DOOR RAW OPENING HEIGHT
SH	= OVERHEAD HEIGHT
PH	= PIT HEIGHT
FW	= LEFT FRONT WALL
FW1	= RIGHT FRONT WALL



YLÄTILA

ALATILA

HUOMAA: Nämä piirustukset ovat vain alustavaa suunnittelua varten. CAD-kuva luodaan maksimissaan vain kahden hissin ryhmälle. Ota yhteyttä KONE:een lisätietojen saamiseksi, erityisesti ennen rakennustoiminnan aloittamista.



MonoSpace
500

KONE Hissit Oy
Aku Korhosen tie 8
PL 26, 00440 HELSINKI
Puh 02047551
E-mail: asiakaspalvelu@kone.com

TECHNICAL SPECIFICATIONS	
KONE PRODUCT	: PW07/10-19
GROUP SIZE	: 1
SAFETY REGULATIONS	: EN81-20
LOAD	: 525 kg
SPEED	: 1.0 m/s
LANDINGS	: 0 / 0

PROJECT NAME: Sauna Restaurant Elevator	
ARCHITECT: Marjo Kuisma	
LOCATION: Lahti	
DATE: 2018-01-21	ISSUE: